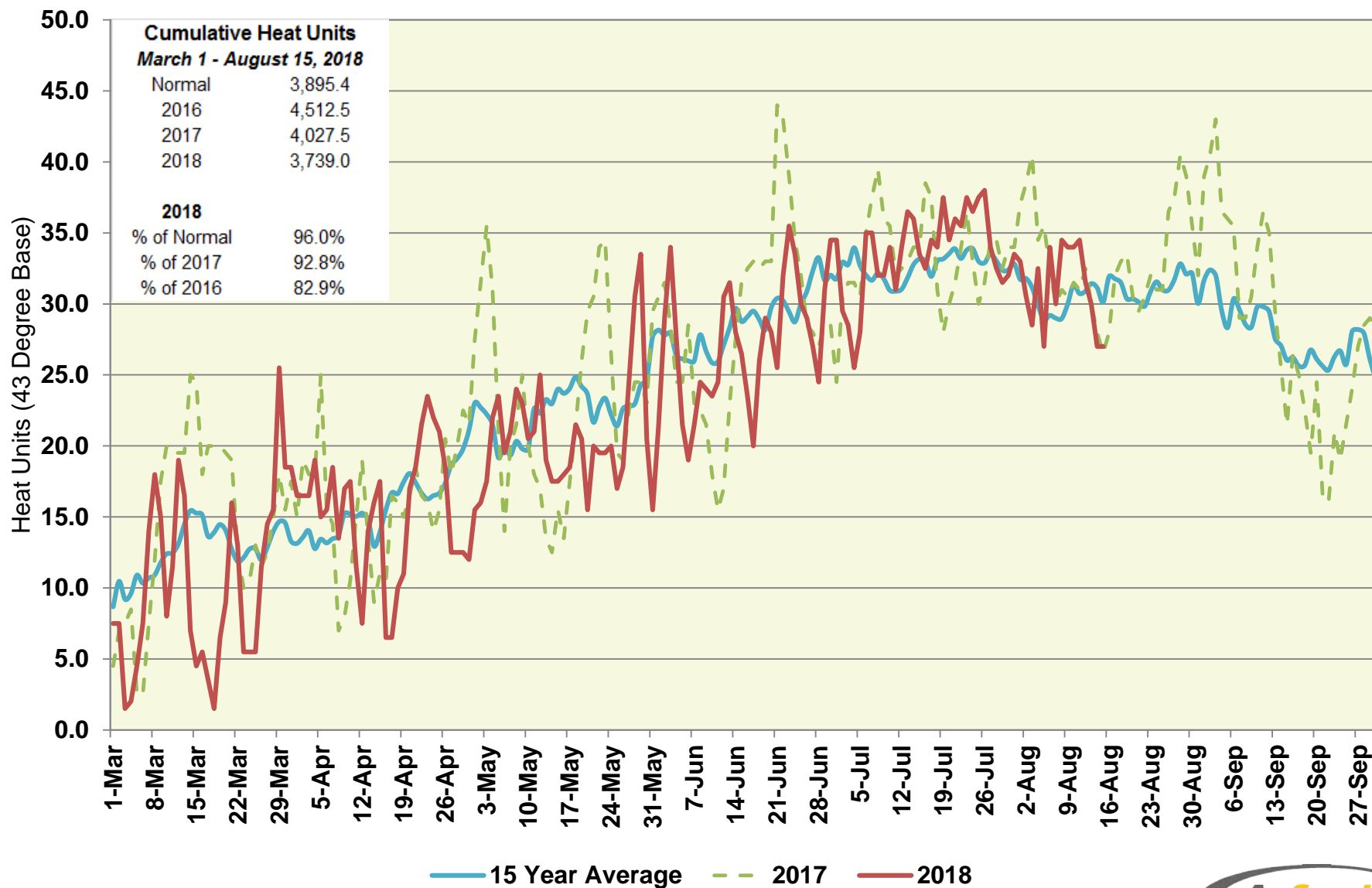


# Patterson Station (Central Region)

## Heat Units – 2018 vs 2017 & 15 Year Average



# Patterson Station (Central Region)

## Heat Units – 2018 vs 2017 & 15 Year Average

Period	2018 Semi- Monthly				2017 Semi- Monthly				15 Year Average Semi- Monthly			
	Avg Max	Avg Min	Heat Units	Cumulative Heat Units	Avg Max	Avg Min	Heat Units	Cumulative Heat Units	Avg Max	Avg Min	Heat Units	Cumulative Heat Units
March 1 - 15	64.4	40.8	144.0	144.0	70.2	42.1	197.5	197.5	67.5	41.9	175.7	175.7
March 16 - 31	67.4	40.6	175.5	319.5	69.7	47.9	252.5	450.0	69.9	43.0	214.8	390.5
April 1 - 15	71.7	45.2	232.0	551.5	69.8	45.3	218.0	668.0	70.7	43.3	209.7	600.1
April 16 - 30	72.6	43.5	225.5	777.0	71.3	49.0	257.5	925.5	75.7	45.5	263.9	864.0
May 1 - 15	79.0	47.3	302.5	1,079.5	78.4	50.7	323.5	1,249.0	80.7	48.4	323.1	1,187.1
May 16 - 31	78.3	49.4	333.0	1,412.5	84.1	51.4	396.0	1,645.0	83.4	49.7	377.0	1,564.1
June 1 - 15	86.5	51.1	387.0	1,799.5	83.2	51.8	367.5	2,012.5	87.8	52.7	408.6	1,972.7
June 16 - 30	89.5	53.7	429.0	2,228.5	93.3	59.0	497.0	2,509.5	92.2	54.4	454.4	2,427.1
July 1 - 15	92.2	58.5	485.0	2,713.5	94.9	57.5	497.5	3,007.0	94.1	56.2	482.4	2,909.5
July 16 - 31	95.8	59.9	557.5	3,271.0	94.9	57.5	531.0	3,538.0	94.4	57.8	529.6	3,439.1
August 1 - 15	92.5	55.9	468.0	3,739.0	91.8	59.5	489.5	4,027.5	91.7	55.2	456.3	3,895.4