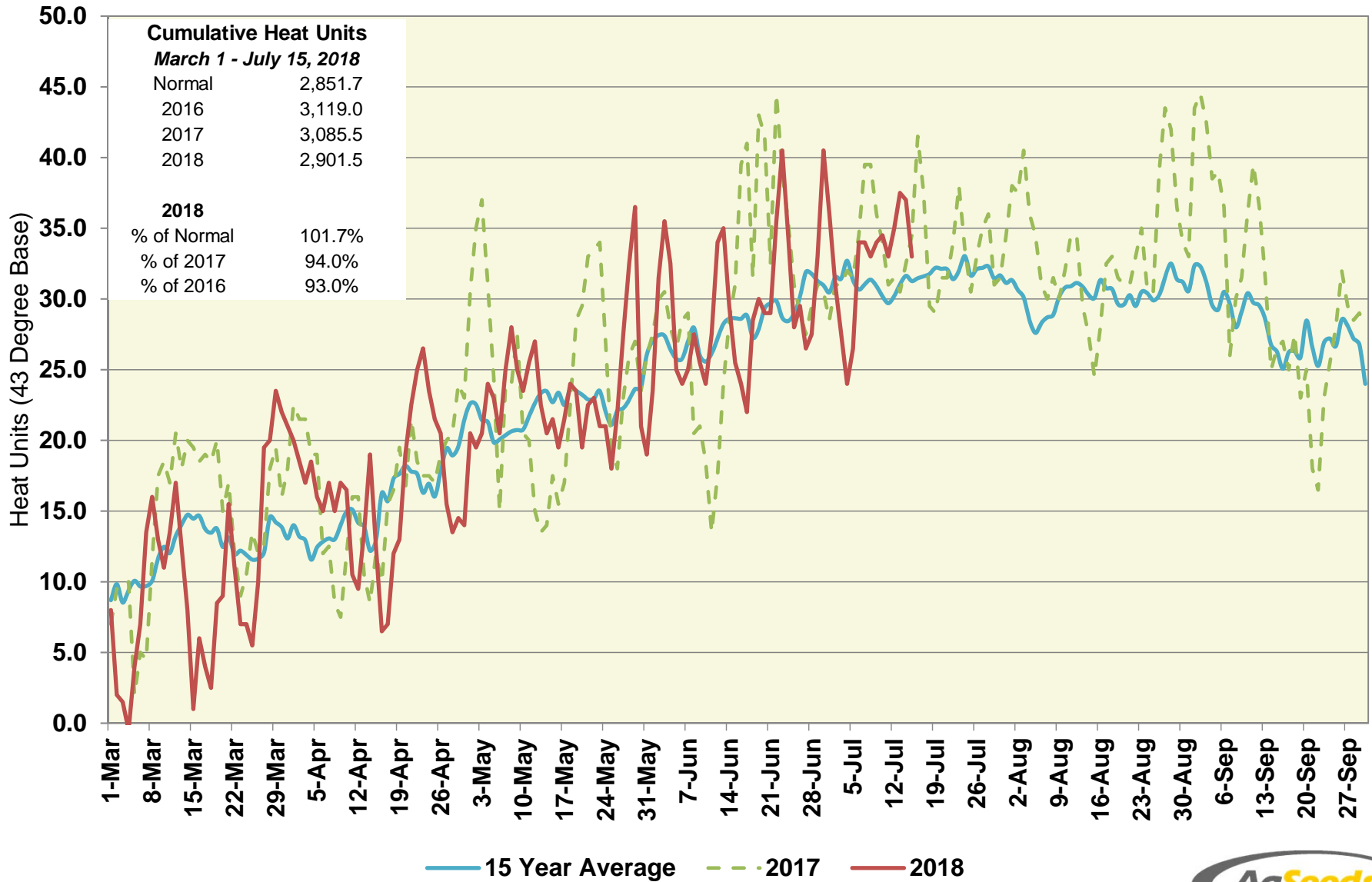


Woodland Station (North Region)

Heat Units – 2018 vs 2017 & 15 Year Average



Woodland Station (North Region)

Heat Units – 2018 vs 2017 & 15 Year Average

| Period | 2018 Semi-Monthly | | | | 2017 Semi-Monthly | | | | 15 Year Average Semi-Monthly | | | |
|---------------|----------------------|---------|------------|-----------------------|----------------------|---------|------------|-----------------------|---------------------------------|---------|------------|-----------------------|
| | Avg Max | Avg Min | Heat Units | Cumulative Heat Units | Avg Max | Avg Min | Heat Units | Cumulative Heat Units | Avg Max | Avg Min | Heat Units | Cumulative Heat Units |
| March 1 - 15 | 61.9 | 41.1 | 127.5 | 127.5 | 68.1 | 43.2 | 190.0 | 190.0 | 65.8 | 42.7 | 168.6 | 168.6 |
| March 16 - 31 | 67.0 | 43.0 | 192.0 | 319.5 | 68.3 | 48.9 | 249.0 | 439.0 | 67.9 | 44.1 | 208.3 | 376.8 |
| April 1 - 15 | 70.4 | 47.0 | 235.5 | 555.0 | 68.1 | 47.1 | 219.0 | 658.0 | 69.1 | 43.6 | 200.3 | 577.1 |
| April 16 - 30 | 74.0 | 45.9 | 254.5 | 809.5 | 72.3 | 50.5 | 276.5 | 934.5 | 74.8 | 46.8 | 267.0 | 844.1 |
| May 1 - 15 | 81.1 | 51.1 | 346.5 | 1,156.0 | 80.3 | 52.3 | 349.0 | 1,283.5 | 79.3 | 49.9 | 324.1 | 1,168.2 |
| May 16 - 31 | 79.6 | 52.9 | 372.0 | 1,528.0 | 83.8 | 52.7 | 403.5 | 1,687.0 | 81.0 | 51.1 | 369.3 | 1,537.5 |
| June 1 - 15 | 88.1 | 54.7 | 425.5 | 1,953.5 | 82.7 | 53.2 | 374.5 | 2,061.5 | 85.4 | 54.6 | 405.2 | 1,942.7 |
| June 16 - 30 | 90.2 | 56.9 | 458.0 | 2,411.5 | 94.6 | 61.6 | 526.5 | 2,588.0 | 89.4 | 55.7 | 443.6 | 2,386.3 |
| July 1 - 15 | 92.0 | 59.3 | 490.0 | 2,901.5 | 94.7 | 57.6 | 497.5 | 3,085.5 | 91.5 | 56.5 | 465.5 | 2,851.7 |