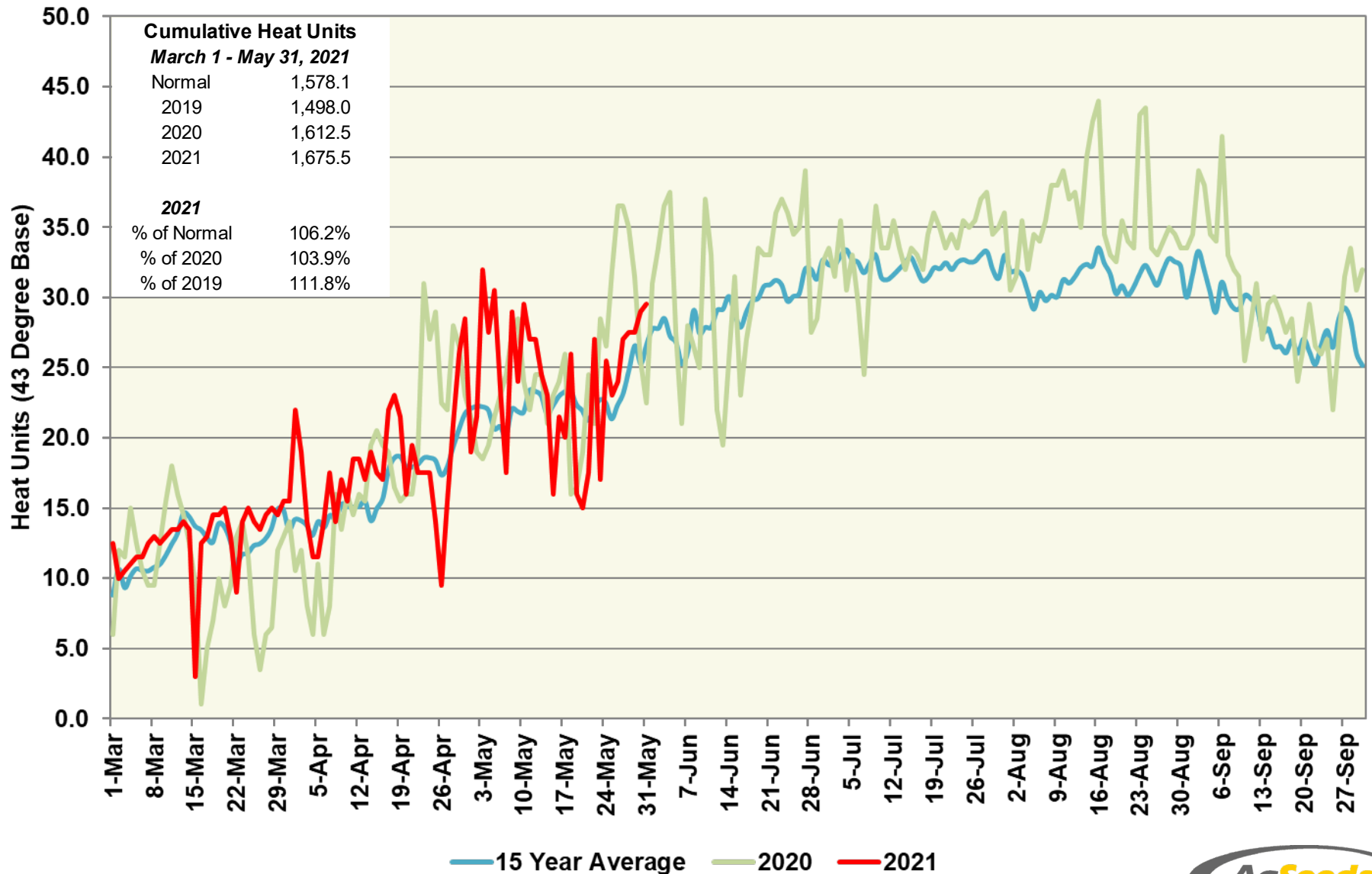


Patterson Station (Central Region)

Heat Units – 2021 vs 2020 & 15 Year Average



Patterson Station (Central Region)

Heat Units – 2021 vs 2020 & 15 Year Average

Period	2021 Semi-Monthly				2020 Semi-Monthly				15 Year Average			
	Avg Max	Avg Min	Heat Units	Cumulative Heat Units	Avg Max	Avg Min	Heat Units	Cumulative Heat Units	Avg Max	Avg Min	Heat Units	ve Heat Units
March 1 - 15	67.9	41.5	175.5	175.5	68.7	41.9	185.0	185.0	67.2	40.9	172.6	172.6
March 16 - 31	71.0	42.9	223.0	398.5	62.8	40.8	140.0	325.0	69.5	41.7	208.3	380.9
April 1 - 15	76.3	42.6	246.5	645.0	68.3	43.4	193.0	518.0	71.3	42.6	216.9	597.8
April 16 - 30	78.9	45.3	286.0	931.0	79.6	50.5	330.5	848.5	76.8	44.8	277.4	875.2
May 1 - 15	85.0	50.5	371.5	1,302.5	83.1	48.6	342.5	1,191.0	80.8	47.1	329.8	1,205.0
May 16 - 31	83.1	49.6	373.0	1,675.5	85.4	53.3	421.5	1,612.5	82.1	49.1	373.1	1,578.1
June 1 - 15					88.9	55.1	435.0	2,047.5	87.7	51.5	419.3	1,997.4
June 16 - 30					94.1	56.5	485.0	2,532.5	91.8	53.5	458.8	2,456.1
July 1 - 15					95.4	55.6	487.5	3,020.0	93.3	54.9	485.3	2,941.4
July 16 - 31					96.2	59.6	558.0	3,578.0	93.0	57.3	516.6	3,458.1
August 1 - 15					97.4	60.7	540.5	4,118.5	91.6	54.8	466.0	3,924.1
August 16 - 31					96.6	60.8	570.5	4,689.0	92.1	54.6	505.9	4,430.0
Sept 1 -15					92.4	58.8	489.0	5,178.0	90.0	53.3	447.3	4,877.3
Sept 16 - 30					87.8	54.3	421.0	5,599.0	86.7	50.1	402.3	5,279.6