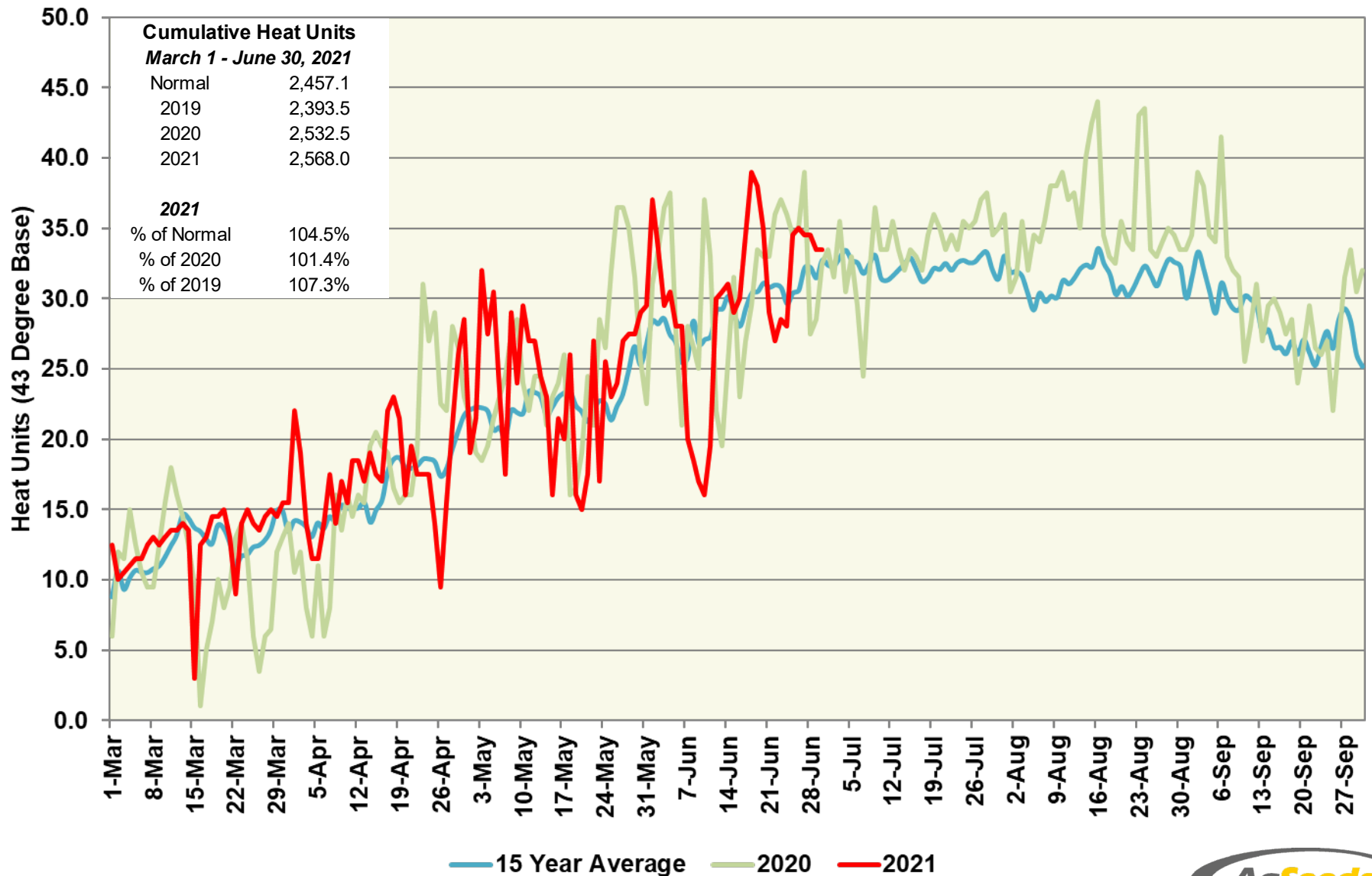


# Patterson Station (Central Region)

## Heat Units – 2021 vs 2020 & 15 Year Average



# Patterson Station (Central Region)

## Heat Units – 2021 vs 2020 & 15 Year Average

| Period         | 2021<br>Semi-Monthly |         |            |                       | 2020<br>Semi-Monthly |         |            |                       | 15 Year Average |         |            |               |
|----------------|----------------------|---------|------------|-----------------------|----------------------|---------|------------|-----------------------|-----------------|---------|------------|---------------|
|                | Avg Max              | Avg Min | Heat Units | Cumulative Heat Units | Avg Max              | Avg Min | Heat Units | Cumulative Heat Units | Avg Max         | Avg Min | Heat Units | ve Heat Units |
| March 1 - 15   | 67.9                 | 41.5    | 175.5      | 175.5                 | 68.7                 | 41.9    | 185.0      | 185.0                 | 67.2            | 40.9    | 172.6      | 172.6         |
| March 16 - 31  | 71.0                 | 42.9    | 223.0      | 398.5                 | 62.8                 | 40.8    | 140.0      | 325.0                 | 69.5            | 41.7    | 208.3      | 380.9         |
| April 1 - 15   | 76.3                 | 42.6    | 246.5      | 645.0                 | 68.3                 | 43.4    | 193.0      | 518.0                 | 71.3            | 42.6    | 216.9      | 597.8         |
| April 16 - 30  | 78.9                 | 45.3    | 286.0      | 931.0                 | 79.6                 | 50.5    | 330.5      | 848.5                 | 76.8            | 44.8    | 277.4      | 875.2         |
| May 1 - 15     | 85.0                 | 50.5    | 371.5      | 1,302.5               | 83.1                 | 48.6    | 342.5      | 1,191.0               | 80.8            | 47.1    | 329.8      | 1,205.0       |
| May 16 - 31    | 83.1                 | 49.6    | 373.0      | 1,675.5               | 85.4                 | 53.3    | 421.5      | 1,612.5               | 82.1            | 49.1    | 373.1      | 1,578.1       |
| June 1 - 15    | 86.0                 | 53.1    | 398.0      | 2,073.5               | 88.9                 | 55.1    | 435.0      | 2,047.5               | 87.6            | 51.6    | 417.8      | 1,995.9       |
| June 16 - 30   | 94.3                 | 57.7    | 494.5      | 2,568.0               | 94.1                 | 56.5    | 485.0      | 2,532.5               | 91.9            | 53.8    | 461.2      | 2,457.1       |
| July 1 - 15    |                      |         |            |                       | 95.4                 | 55.6    | 487.5      | 3,020.0               | 93.3            | 54.9    | 485.3      | 2,942.4       |
| July 16 - 31   |                      |         |            |                       | 96.2                 | 59.6    | 558.0      | 3,578.0               | 93.0            | 57.3    | 516.6      | 3,459.0       |
| August 1 - 15  |                      |         |            |                       | 97.4                 | 60.7    | 540.5      | 4,118.5               | 91.6            | 54.8    | 466.0      | 3,925.0       |
| August 16 - 31 |                      |         |            |                       | 96.6                 | 60.8    | 570.5      | 4,689.0               | 92.1            | 54.6    | 505.9      | 4,430.9       |
| Sept 1 -15     |                      |         |            |                       | 92.4                 | 58.8    | 489.0      | 5,178.0               | 90.0            | 53.3    | 447.3      | 4,878.2       |
| Sept 16 - 30   |                      |         |            |                       | 87.8                 | 54.3    | 421.0      | 5,599.0               | 86.7            | 50.1    | 402.3      | 5,280.5       |